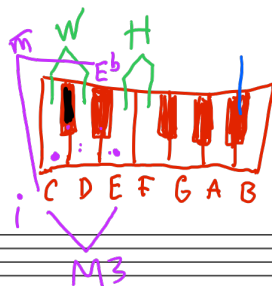


major mode



Scale: C D E F G A B C

Intervals: W W H W W W H

Labels: Tonic (C), dominant (G), leading tone (B)

natural minor

harmonic minor

melodic minor

Scale: A B C D E F G A B C

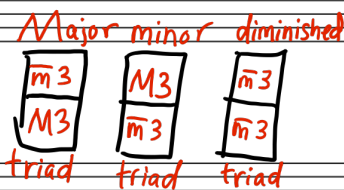
Intervals: W H W W H W W

Labels: Harmonic minor (A B C D E F G A), Melodic minor (A B C D E F G A B C)

Diatonic triads (B^bM)

Scale: B^bM: I ii iii IV V vi vii^o I

Labels: tonic (I), dominant (V)



Roman numerals:

Uppercase = major

Lowercase = minor

- diminished (lowercase and "o")

Triads: I, I⁶, I⁴

Inversions: 1st inversion, 2nd inversion, 3rd inv.

Seventh chords: I⁷, I⁶₅, I⁴₃, I⁴₂

Diatonic Seventh chords