

Q1: lowers half-tone Q2: 2 Q3: F Sharp Q4: Ode to Joy

Exercise 1a - Write note names below

A musical staff in treble clef with a key signature of one flat (Bb). The notes are: A4, F4, C4, C4, G4, B4, D4, E4, F4, B3, F4, A4, E4, B3, A3, G3.

Exercise 1b - Write note names below

A musical staff in treble clef with a key signature of two sharps (F# and C#). The notes are: F#4, C4, Eb4, Bb4, A4, D#4, Gb4, A#4, Db4, C#4, Bb4, C#4, Ab4, F#4, C#4, E4.

Exercise 1c - Write note names below

A musical staff in treble clef with a key signature of two sharps (F# and C#). The notes are: F#4, E4, D4, C#4, E4, G4, C#4, D4, A4, B4, C#4, F#4, E4, B4, B4, A4.

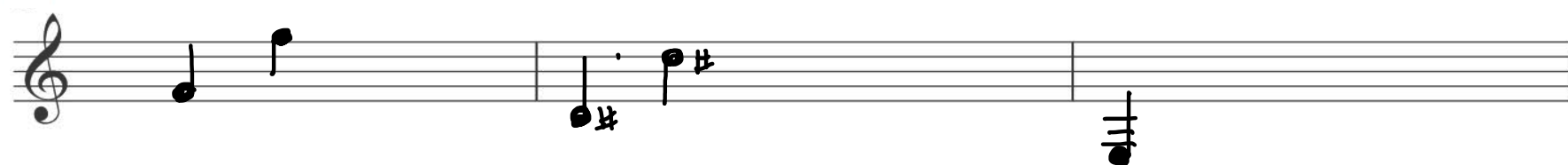
Exercise 1d - Write note names below

A musical staff in treble clef with a key signature of three sharps (F#, C#, and G#). The notes are: E4, G#4, B4, F4, E4, C#4, A4, B4, C#4, D#4, A#4, B4, G4, F#4, E4, B4.

Exercise 1e - Play notes below on the guitar
 Record yourself and post in the Week 1 forum thread for feedback!



Exercise 1f - Write the following notes in:



F: no ledger lines
(two possibilities)

D sharp: no ledger lines
(two possibilities)

Low E: multiple ledger lines
Below (one possibility)



G sharp: no ledger lines
(two possibilities)

High B flat: ledger line(s)
above (one possibility)

Low A sharp: ledger line(s)
below (one possibility)

Exercise 1g - Write in the notes associated with
all OPEN STRINGS of the guitar

Write in the notes found on the
THIRD FRET of every guitar string

